

ErbaScan supports following MIKROLATEST products

Product	Registration number	Catalogue number	Target
ErbaScan	50004880	INS00072	Reader
ErbaExpert	10020487	INS00075	Microbiology software
MIKROLATEST ID			
ENTEROtest 24	10003391	MLT00006	Enterobacteriaceae
ENTEROtest 24 N	10020290	MLT00008	Enterobacteriaceae
ENTEROtest 16	10003376	MLT00005	Enterobacteriaceae
ENTERO-Rapid 24	10003390	MLT00007	Enterobacteriaceae
ENTERO-Screen	10003377	MLT00009	Enterobacteriaceae
NEFERMtest 24	10003388	MLT00010	Non-fermentative G- rods
STAPHYtest 24	10010223	MLT00013	Staphylococci
STAPHYtest 16	10003378	MLT00012	Staphylococci
STREPTOtest 24	10010245	MLT00015	Streptococci, Enterococci
STREPTOtest 16	10003385	MLT00014	Streptococci
EN-COCCUStest	10003383	MLT00004	Enterococci
NEISSERIAtest	10003382	MLT00011	Neisseriaceae
ANAEROtest 23	10003366	MLT00001	Anaerobic bacteria
CANDIDAtest 21	10010220	MLT00002	Yeasts
CANDIDA-Screen	10010269	MLT00003	Yeasts
MIKROLATEST BP			
SENSILAtest G-I	10020279	MLT00077	Enterobacteriaceae (basic antibiotics)
SENSILAtest G-II	10020280	MLT00078	Enterobacteriaceae (special antibiotics)
SENSILAtest NEFERM	10020285	MLT00079	Non-fermentative G- rods
SENSILAtest URINE	10020284	MLT00081	Urinary tract pathogens
SENSILAtest G+	10020282	MLT00076	Enterococci and Streptococci (excluding Str. pneumoniae)
SENSILAtest STAPHY	10020283	MLT00080	Staphylococci
MIKROLATEST MIC			
MIC G-I	10020295	MLT00044	Enterobacteriaceae (basic antibiotics)
MIC G-II	10020296	MLT00045	Enterobacteriaceae (special antibiotics)
MIC NEFERM	10020297	MLT00046	Non-fermentative G- rods
MIC URINE	10020299	MLT00048	Urinary tract pathogens
MIC G+	10020300	MLT00043	Streptococci, Enterococci
MIC STAPHY	10020298	MLT00047	Staphylococci
MIC Single Strips		MLT00049-69	

ErbaScan  
ErbaExpert



Erba Lachema s.r.o.  
Karásek 2219/1d, 621 00 Brno, Česká republika  
Tel.: +420 517 077 111  
E-mail: diagnostics@erbamannheim.com  
www.erbalachema.com



ERBASCAN20180901EN

Specifications are subject to change without prior notice.  
Pictures used only for representation purposes - subject to change without prior notice.

Advanced solution  
for your microbiology lab

## Advanced solution for your microbiology diagnostics

### ErbaScan

Universal 12-channel microbiology reader

- Microbiology reader optimized for both, identification and antibiotic susceptibility testing
- Standardized semi-automated reading of all MIKROLATEST ID and AST tests
- Robust and high quality optics precisely selected for microbiology purposes
- Reliable and highly reproducible results
- Auditability of your results
- Compatible with both, 96-well plate microtitration plates as well as individual strips
- Automatically recognizes the position and number of individual tests in the plate

#### Technical specifications:

- Optical parameters: 12 channels, one reference channel
- Five filters on board: 405, 450, 532, 620 and 730 nm
- Measuring range: 0.000 – 4.000 O.D.
- Light source: LED
- Reading time: 15 s for ID, 6 s for AST
- Instrument control: External PC (not included in the package)
- Instrument connection: USB port
- Power supply: 120 – 230 V, 50 – 60 Hz
- Environmental conditions: Temperature 15 – 30°C, relative humidity max. 80%
- Dimensions: 426 x 280 x 174 (d x w x h) mm
- Weight 7,2 kg

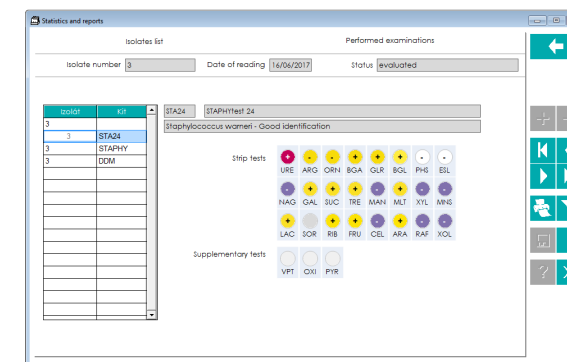


## Sophisticated expert software to evaluate your samples

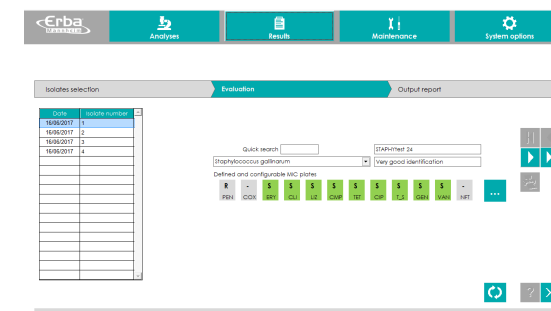
### ErbaExpert

Intuitive software tool for evaluation of microbiology samples

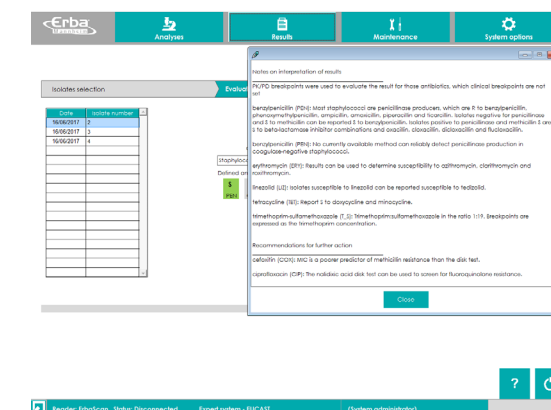
- Operates in connection or independently on ErbaScan reader
- Full modularity enabling: Patient management, Sample and isolate registration, MIKROLATEST ID and AST evaluation
- Expert evaluation of clinically relevant samples
- Tutorial driven environment guides users through the whole evaluation process step by step
- Modern user interface
- EUCAST and CLSI interpretation rules
- Direct data import from other system (direct identification methods, disc diffusion methods)
- Data archiving
- Sophisticated statistics and reports
- Bi-directional LIS communication



Identification on all MIKROLATESTs



Antibiotic susceptibility testing on all MIC and BP tests



Expert evaluation based on EUCAST and CLSI standards

### Workflow

Erba Lachema Microbiology diagnostics

